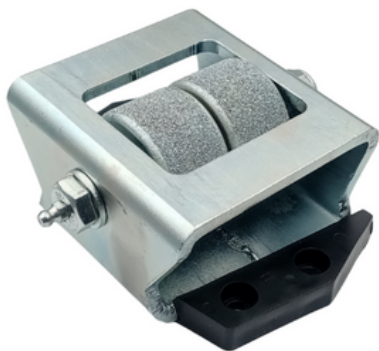


RollStone Pro®

SAND DUO #400 & #800 & #1400

Sandblasting System
For Automatic Machines

Easy to assemble and
replace rollers



About

The ROLLSTONE PRO ® Sandblasting System is a tool with a frankfurt fitting, easy to assemble and replace various components and rollers, making it an easy-to-maintain tool that will allow for a considerable increase in productivity when compared to more traditional systems.

Now with its new structure, designed to be more resistant and compact, the ROLLSTONE PRO ® model also has an advantage in the speed with which the rollers can be assembled or disassembled to minimise service times.

The coating used in sand rolls manufactured by Iberdin®, is composed of high-quality tungsten carbide, which allows them to have a high performance and therefore great resistance to wear.

The rollers are easy to replace and the finish can be changed by choosing the type: bush-hammered or sandblasted. The ROLLSTONE PRO® system has a central lubrication screw, which allows the rollers to be better lubricated and consequently increases the durability of the product.

The Rollstone® system can be used on manual bench top machines or automatic polishing line machines



Features

Number of Rolls	2
Grit	#400, #800 or #1400
Specifications	Centre screw (shaft) with lubrication cup; One-piece steel frame
Fitting	Frankfurt
To use in (equipment)	Stationary Machines; Automatic Polishing Line Machines; Floor Grinding Machines
Indicated for	Marble / Limestone / Quartz
Finishing Type	#400 - Thin Sandblasting #800 - Medium Sandblasting #1400 - Thick Sandblasting
Product Code	#400 - 92401A023 #800 - 92401A024 #1400 - 92401A025

